

# CERTIFICATE OF LOCATION OF GOVERNMENT CORNER

NORTHEAST Corner of Section 27, Township 107N, Range 39W

5th Principal Meridian, State of Minnesota, County of MURRAY

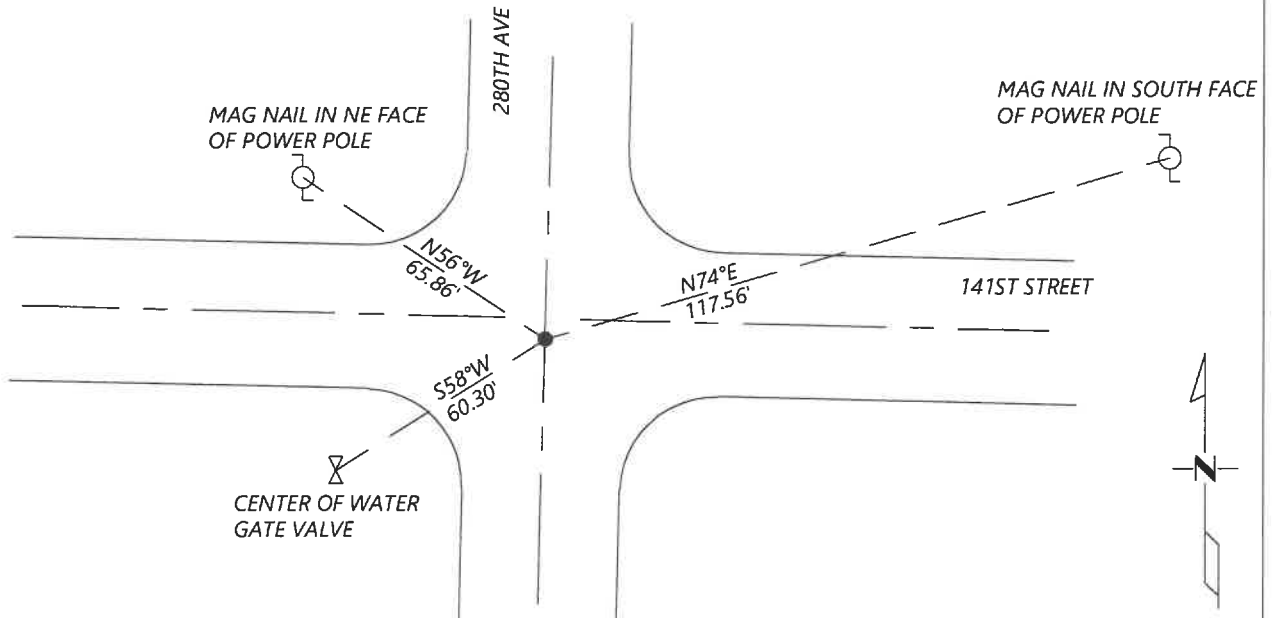
At the corner location shown on the sketch:

On 8/27/2020 found a NO.5 REBAR, BENT  
DATE

left monument as found       lowered monument       removed monument (explain)

On \_\_\_\_\_ placed a \_\_\_\_\_  
DATE

### SKETCH OF REFERENCE TIES



Statement of evidence for this corner location is on back of this page.

I hereby certify that this document was researched and prepared by me or under my direct supervision and that I am a licensed Land Surveyor under the laws of the State of Minnesota.

Signature [Handwritten Signature]

Date 6/16/2021 License No. 45874

Title:

- Land Surveyor       Professional Engineer  
 County Surveyor       County Engineer

OFFICE OF THE COUNTY RECORDER

County of Murray

I hereby certify that this document was filed in the Co.

Recorder's office at \_\_\_\_\_ M. on the \_\_\_\_\_ day of \_\_\_\_\_ A.D. 20 \_\_\_\_\_

County Recorder Karen Brown  
JUN 22 2021, Deputy

DOCUMENT NO. \_\_\_\_\_

Statement of Evidence:

Northeast Corner of Section 27, Township 107 North, Range 39 West, 5th Principal Meridian, Murray County, Minnesota.

*No GLO notes.*

- Oct. 1909* Survey record for Section 26 shows a concrete monument with iron pin again.  
N&C in power pole NW 63.00' and NE 113.90'
- Aug. 2000* A survey in Section 26 by Perry Zieske shows an iron monument in place at the corner.
- June 2012* Highway Department records show a  $\frac{1}{2}$ " cast iron monument at the corner with the following coordinates: N: 174078.03 E: 569465.79
- Sept. 2020* Westwood Professional Services searched and found a No. 5 rebar bent at the corner and measured at base. The coordinates fit well with the 2012 Highway Department records. I accepted the found monument and set reference ties.

Analysis of the recovered data, field evidence and survey measurements, indicates that the monument found is the correct perpetuation of this corner. For additional information concerning this corner please contact Westwood Professional Services.